

# Wright Line's LAN Management System II™ sets new standard in storing and organizing Network Gear

by David Brisson

I've encountered it too many times: Data centers cramped with servers, hubs, routers and switches stacked on common desktops and workbenches.

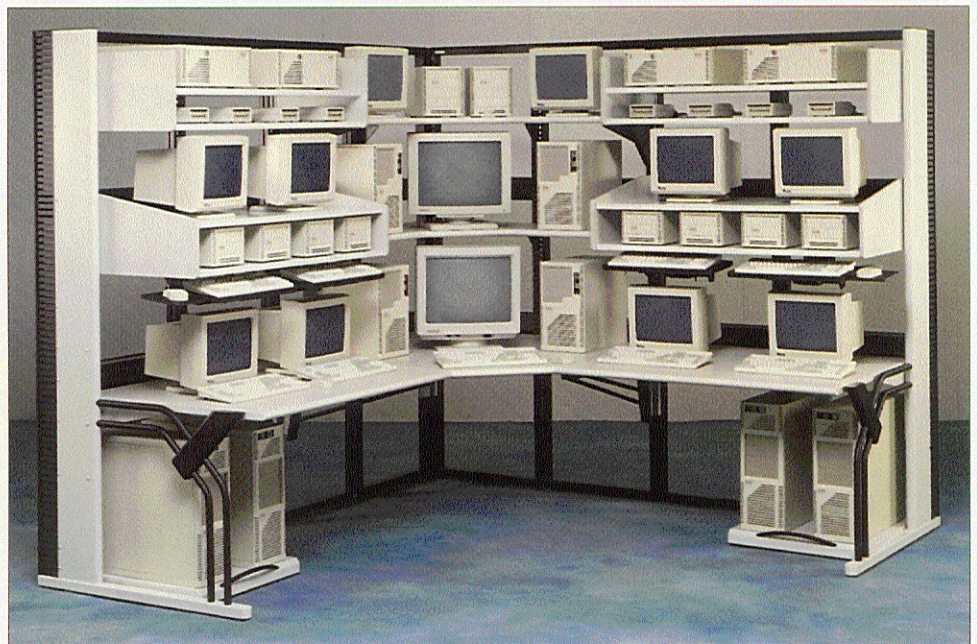
Today, at a time when client/server LANs are mission-critical and growing in virtually every medium to large-scale enterprise, most network operation centers are in a quandary. In many instances, the overcrowding is so serious, it interferes with how network technicians access their equipment.

Network adds, moves and changes, critical to integrating new users and applications are frustrating, and real estate is at a premium. Traditional racking systems also have limitations when dealing with these dynamic environments. This is why Wright Line, a long-standing innovator of technical furniture, created LAN Management System II (LMS II).

“

LMS II...is the first system engineered to handle all the special requirements of existing and expanding LANs.

”



*The open architecture of this corner configuration allows immediate access to equipment and cables, and makes good use of often wasted corner space.*

## A Tradition of Industry-Specific Innovation

LMS II, in contrast to other solutions I've seen, is the first system engineered to handle all the special requirements of existing and expanding LANs. LMS II's modular, open architecture lets you choose from a broad range of over 500 multi-sized, specialized storage components and options, all of which can be built and reconfigured as networking needs change.

Experiencing LMS II for the first time, I instantly noticed frame-attached tower roll-out modules on dual ball-bearing suspensions tracking neatly in and out without a hint that each carried a hefty

400 lb. computer tower. I saw glass-enclosed rackmount modules storing servers, hubs and routers, and eye-catching white laminated shelves with muscle to match their visual appeal. Aside from being the most attractive LAN storage solution I've seen, what makes it outstanding is its ability to give the data center a professional environment you can be proud of, the strength to support your full suite of network hardware and easy equipment access so you can effectively manage your LAN.

Add electrically isolated components — which I'll amplify on later — among other safety features and it's little wonder  
*(continued on next page)*



One 72" wide frame houses monitors, servers, towers, keyboards and industry standard rack mount equipment.

why LMS II, according to Wright Line, is the network industry's number one choice in technical furniture. "LMS II is the new standard in LAN management," asserts Peter Fink, the firm's vice president of marketing. "It accounts for every possible storage need from conserving space to LAN expansion and it was designed with an attention to detail no other system delivers."

Bold words from a biased observer — perhaps. In point of fact, however, Wright Line has been delivering comparable solutions for more than 60 years.

LMS II and its sister system, LAN Locker II (with an enclosed rather than open architecture) are but a continuation of the firm's knack for creating industry-

specific solutions. As Fink puts it: "Every Wright Line product is developed in response to feedback from our customers. This lets us fine tune our systems to the unique needs of individual markets. With LMS II," he adds, "we surveyed a large number of

companies with small to large LANs, analyzed their needs and tailored systems to meet them."

Taking individual requirements into account is fundamental to Wright Line's delivery of LMS II to customers — no cookie cutter approach here. The firm's direct sales force is networked to Wright Line headquarters and works with customers to individualize the design of every system. "Each customer gets the exact system they need from day one," echoes Fink. "We survey the customer's hardware, floor and workspace and submit a CAD drawing of LMS II as it would appear in their environment before we build the system." And if you're in a hurry, no problem: Wright Line today is delivering more than 70% of LMS II orders in less than five business days. It's just part of what Fink calls "Wright Line's obsession with quality and service."

#### Sturdy, Resilient and Flexible

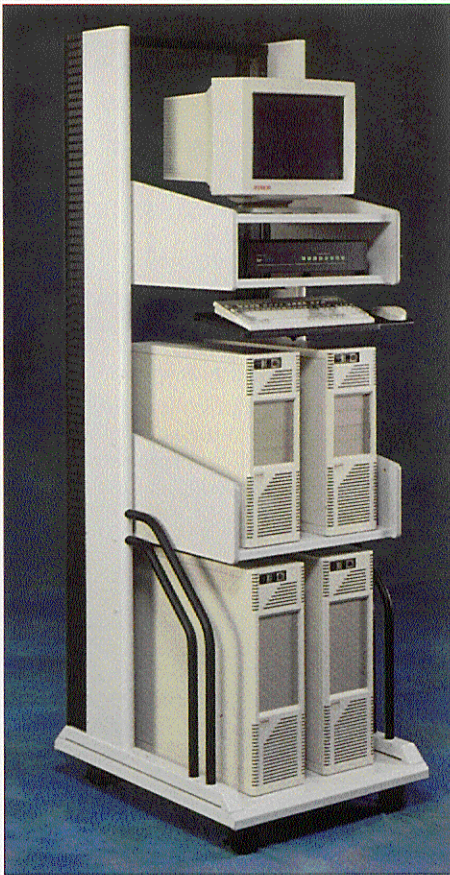
Of many features that distinguish LMS II, the most impressive is the system's unique full open frame design — a highly engineered architecture that delivers structural integrity plus the flexibility underlying LMS II's ease of customization. Formed and welded to support 2000 lbs. per section, four times the weight of the best racking systems, the frame uses 12 gauge steel doubled up in a unique reversed I beam configuration built to last well beyond LMS II's lifetime warranty. Frames are available in nine widths of 24" to 96" and four heights from 45" to 84", any of which can be easily combined using uprights and corner connectors to support large network operations equipment.

“

LMS II is *the* new standard in LAN management.

It accounts for every possible storage need from conserving space to LAN expansion, and it was designed with an attention to detail no other system delivers.

”



*Even the smallest configuration helps to maximize the use of network resources.*

Wright Line's solid construction is taken even further by LMS II's rhomboid-shaped hook patterns found on the frame and corresponding hook-on components. The rhomboid-shaped hooks provide far greater strength and support than those typically seen on other systems. This allows LMS components to support up to 750 lbs. per shelf, far in excess of what others claim.

#### Comprehensive Cable and Power Management

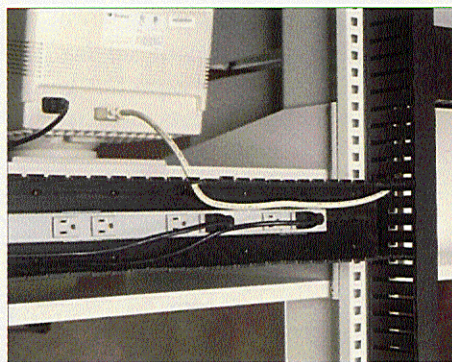
Given the high number of electrical devices which the LMS System is intended to store, it is not surprising to see the obsession Wright Line has with providing redundant safety features. All cable routing paths incorporate insulated treatments of probable contact points such as corners and pass throughs. Each level of storage, be it a shelf, work surface, or even a rack mount module, is isolated from the other levels. Which, according to Fink, provides a safer environment for the operator or technician while protecting the equipment and

systems themselves from both electrical shock hazards and even RF Interference transmission.

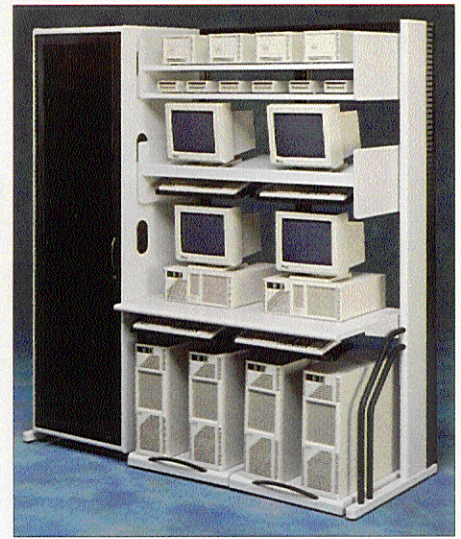
This concept is taken a step further in the patented design of Wright Line's Cable Management System. This design allows electricity and data to be physically separated at each level further promoting safety as well as the performance aspects of the system. The Cable Management Troughs are easily accessed from the rear of the system in open set-ups, or from the front with an "enhanced bracket" option. This option is especially convenient when the furniture is located in a corner or up against a wall. Wright Line also recently made a major improvement to its Cable Management capability by creating an indented cavity within the cable trough itself to flush mount electrical distribution strips at each equipment level. This allows for easy power-up of multiple pieces of equipment while creating more than sufficient space for routing and tucking of excess cables.

#### A Cache of Accessible Features and Options

Wright Line's accent on accessibility is constant in every LMS II module and, frankly, goes far beyond any competitive system. The tower roll-out components mentioned earlier, in addition to their huge weight capacity, allow technicians to easily engage both the sides and back of servers, CD-ROM drives, peripherals etc. Unique in its class, the unit's suspensions not only eliminate side-to-side motion of the roll-out, they more importantly prevent any chance of accidental cable or power detachment. Wright Line



*Horizontal ducts provide 4" wide by 3" deep interior space. Snap-on covers (not shown) conceal wire and cables.*

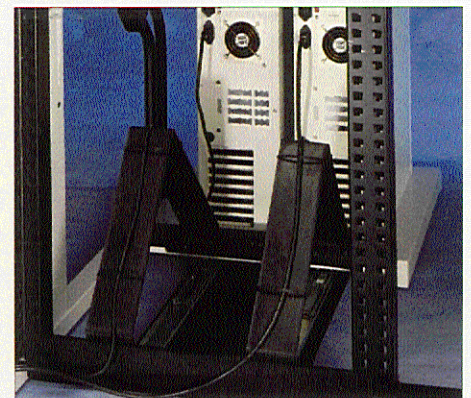


*Integrated Rack Mount Modules provide extra protection for vital hardware.*

also offers a handy cable arm option, ensuring that wire and cables remain in position and tangle free as the tower shelf rolls in and out.

LMS II's rack mount capability is another huge system advantage, providing integrated enclosures for 19" and 24" wide industry-standard hubs, routers, switches, servers, patch panels and more. Set into sturdy, extruded aluminum frames, the module's plexiglass front doors come in smart-looking tints to satisfy users' preferences for hardware visibility. Locking back door panels swing open a full 180° for easy equipment loading, removal and reconfiguration. Wright Line also offers a myriad of configuration options that other vendors don't, notes Fink.

*(continued on back)*



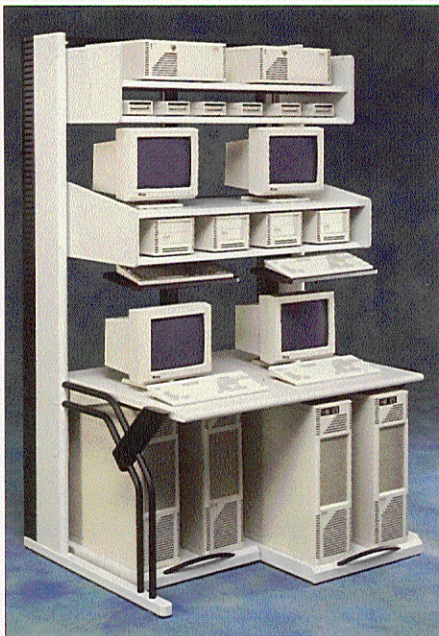
*Optional Retractable Cable Management Arm provides retractable routing of wire and cables, smooth and tangle free, as the Tower Shelf rolls in and out.*

“

Each customer gets the exact system they need from day one.

It's just part of what Wright Line considers it's obsession with quality and service.

”



Tower Roll-out Floor Shelf holds up to 1,000 lbs.

Always mindful of ergonomics, Wright Line offers a number of other LMS options to make network management easier and more comfortable. These include a wide range of worksurfaces with flexible corner configurations to accommodate desktop needs. Locking compartments and drawers add additional storage space for papers, system documentation, media and other supplies. Wright Line also provides optional fully articulating keyboard platforms, and digitizing palate holders to ensure that your workstation is "ergonomically correct."

If mobility is needed, LMS II offers a caster base that optimizes equipment access and rolls easily across your data center floor. A new caster option is also in the works, according to Fink, that will provide a seismic vibration solution and also be ideal for system transport over rough surfaces.

Last but not least, you can add the LMS Switch™ option that lets you control up to 64 network systems from as far as 500 feet away with a single monitor, keyboard and mouse.

"We've tried to put everything network managers and technicians could use into LMS II and we'll keep on going," says Fink. "As good as LMS is right now," he adds, "Wright Line never rests on its laurels."



*David Brisson is a freelance technical writer whose articles appear in national business and trade publications.*

## LMS II SPECS

**Frame Heights:** 45", 61", 72", 84"

**Frame Widths:** 24", 30", 36", 42", 48", 60", 72", 90", 96"

**Weight Capacity:** Individual Frame: 2000 lbs.  
Steel Shelves: 300-750 lbs.  
Laminate Shelves: 300-750 lbs.

**Worksurfaces:** WILSONART laminate. 180° rounded leading edge. Secondary edges band-ed with PVC molding. Sitting height range: 27" - 31". Standing height range: 36" - 40".

**ESD Controls:** Certified compliant with EOS/ESD Association Standards and Advisories. System of common point ground includes personal grounding devices.

**Worksurface:** RTT <10<sup>9</sup> ohms  
RTG <10<sup>7</sup> ohms  
**Surface Coating:** RTT <10<sup>9</sup> ohms  
RTG <10<sup>5</sup> ohms

**Power Distribution:** Hardwired, user-defined 120V, 20 AMP with four circuits including two isolated and shielded circuits. Circuit surge protection up to 6000V. Harmonic distortion controlled by 2+2 wiring. UL Recognized. Complementary series of power strips available.

**Data/Voice:** Category 5 raceway and jacks meet TIA/EIA requirements.

**Cable Management:** Integrated horizontal and vertical 4" cable duct and 8" large capacity cable trough.

**Rack Mounting:** 19" and 24" EIA universal spacing. Seven heights, 4U - 45U.

**Furniture Standards:** Compliant with ANSI (American National Standards Institute) and BIFMA (Business & Institutional Furniture Manufacturers Association)

**Warranty:** Lifetime Warranty

**Manufactured:** Wright Line, Inc.  
160 Gold Star Blvd.  
Worcester, MA 01606, USA  
508-852-4300

For more information, or for an LMS brochure, call 800-225-7348 or 508-852-4300. Fax 508-853-8904. <http://www.wrightline.com>.

# W R I G H T • L I N E